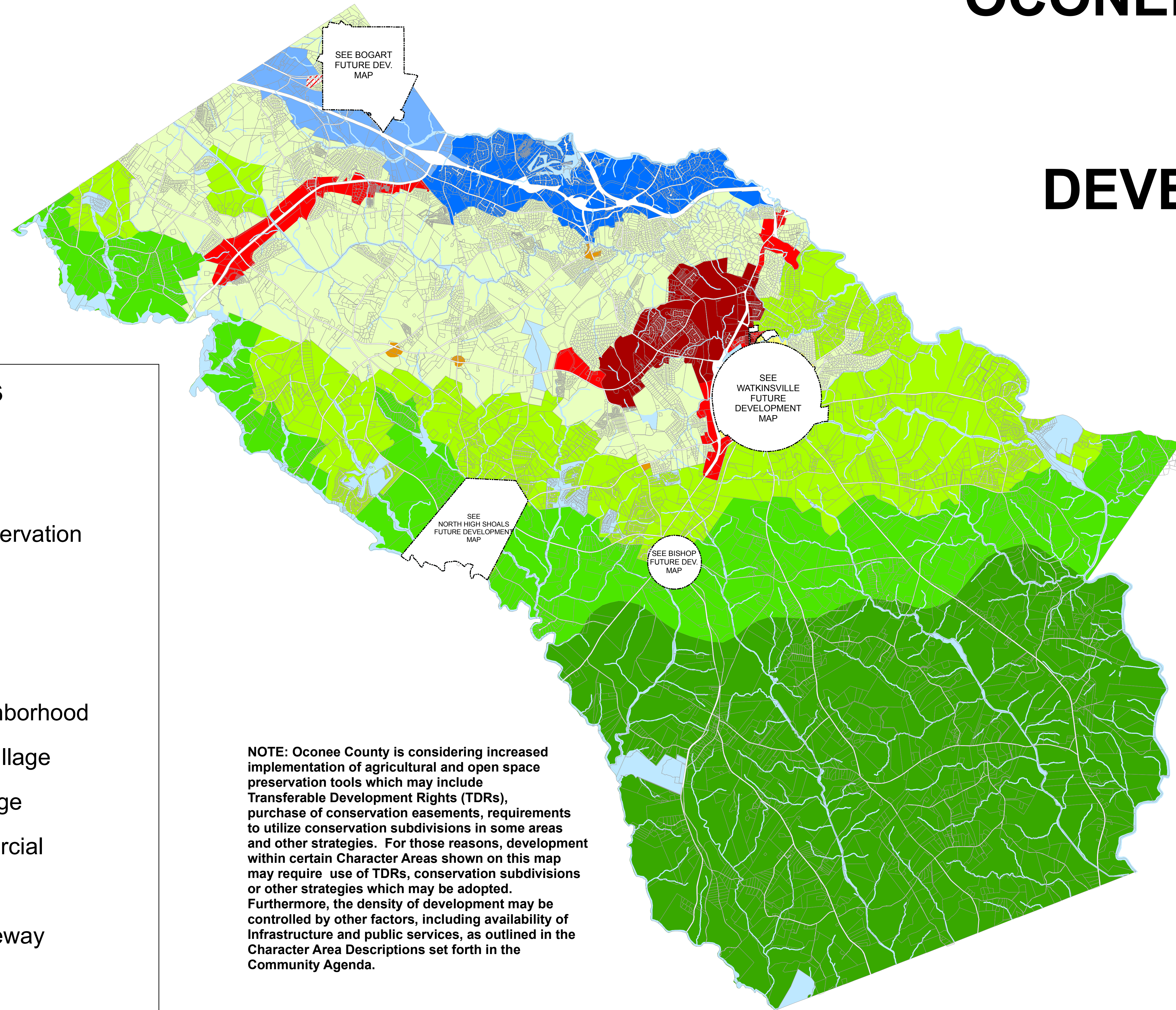
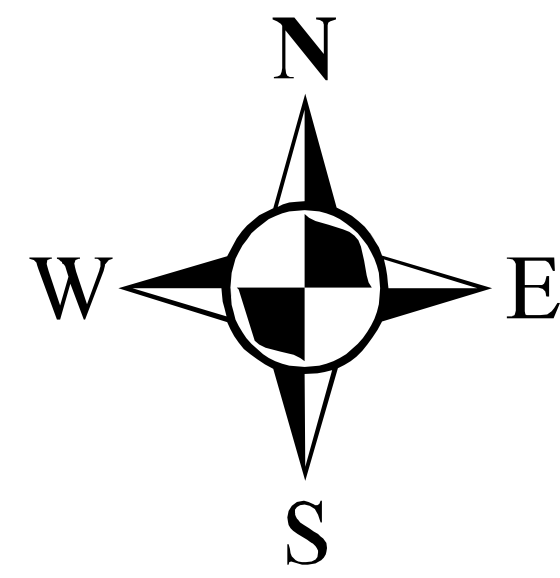


OCONEE COUNTY, GEORGIA FUTURE DEVELOPMENT MAP 2030



Character Areas

-  City Limits
-  Character Areas
-  Agricultural Preservation
-  Rural Places
-  Country Estates
-  Suburban Living
-  Traditional Neighborhood
-  Neighborhood Village
-  Community Village
-  Corridor Commercial
-  Civic Center
-  Technology Gateway
-  Regional Center
-  Parks/Recreation/Conservation

NOTE: Oconee County is considering increased implementation of agricultural and open space preservation tools which may include Transferable Development Rights (TDRs), purchase of conservation easements, requirements to utilize conservation subdivisions in some areas and other strategies. For those reasons, development within certain Character Areas shown on this map may require use of TDRs, conservation subdivisions or other strategies which may be adopted. Furthermore, the density of development may be controlled by other factors, including availability of infrastructure and public services, as outlined in the Character Area Descriptions set forth in the Community Agenda.

NOTE: Public and Semi-public uses are included within each Character Area



Produced Using OCGIS
2008