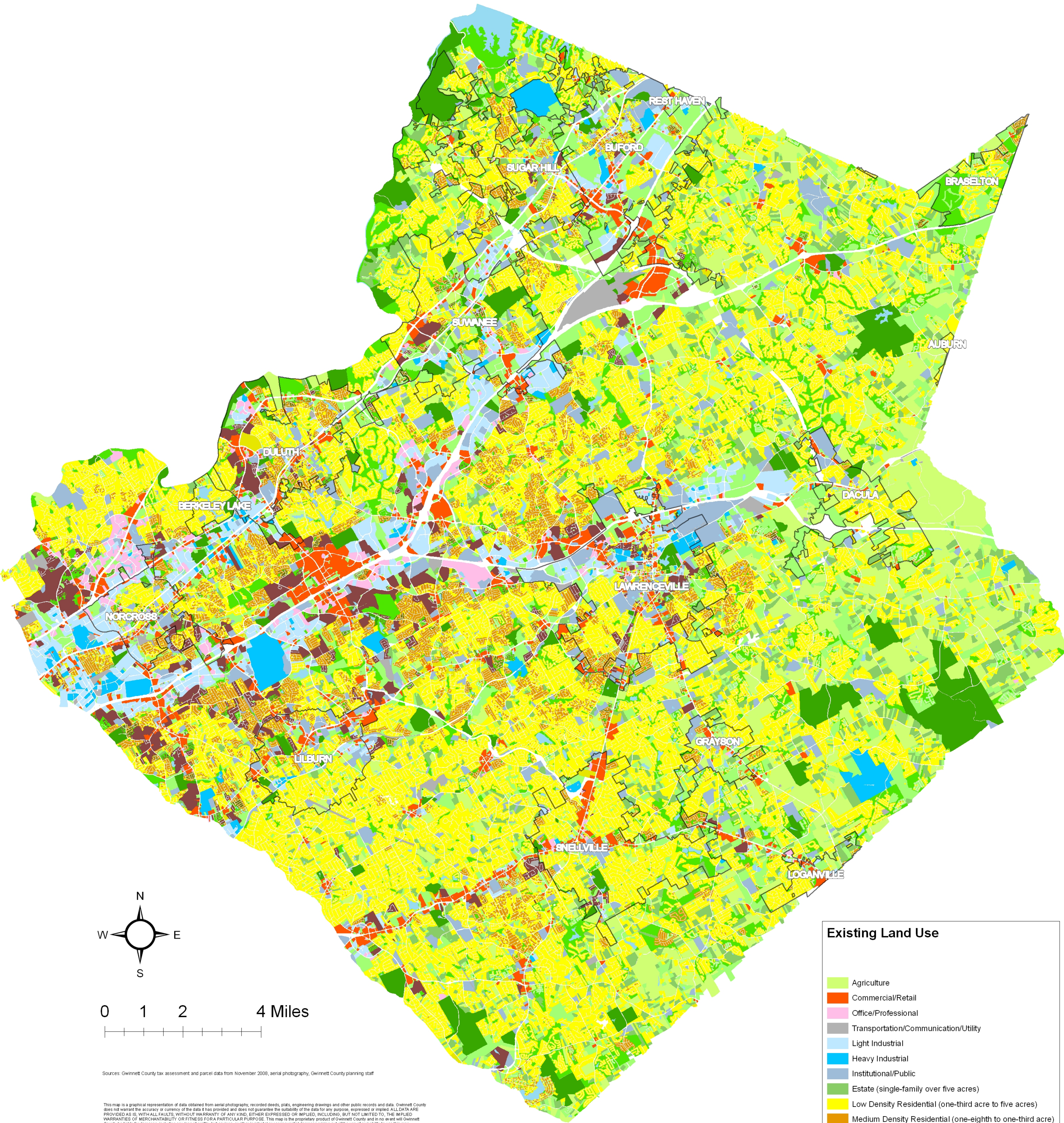


2009 Existing Land Use in Gwinnett County



Sources: Gwinnett County tax assessment and parcel data from November 2008, aerial photography, Gwinnett County planning staff

This map is a graphical representation of data obtained from aerial photography, recorded deeds, plats, engineering drawings and other public records and data. Gwinnett County does not warrant the accuracy or currency of the data it has provided and does not guarantee the suitability of the data for any purpose, expressed or implied. ALL DATA ARE PROVIDED AS IS, WITH ALL FAULTS, WITHOUT WARRANTY OF ANY KIND, EITHER EXPRESSED OR IMPLIED, INCLUDING, BUT NOT LIMITED TO, THE IMPLIED WARRANTIES OF MERCHANTABILITY OR FITNESS FOR A PARTICULAR PURPOSE. This map is the proprietary product of Gwinnett County and in no event will Gwinnett County be liable for damages, including any loss of profits, lost savings, or other incidental or consequential damages arising out of the use of or inability to use this map.

The parcels in some zoning districts have been classified as Low Density Residential regardless of actual lot size. Districts with suffixes CSO, MOD, or CLU are required to average three units or less per acre.

Gwinnett County Department of Planning & Development
Printed July 2009

Existing Land Use

- Agriculture
- Commercial/Retail
- Office/Professional
- Transportation/Communication/Utility
- Light Industrial
- Heavy Industrial
- Institutional/Public
- Estate (single-family over five acres)
- Low Density Residential (one-third acre to five acres)
- Medium Density Residential (one-eighth to one-third acre)
- High Density Residential (eight or more units/acre)
- Mixed Use
- Multifamily Dwellings (includes mobile home parks)
- Park (government parkland)
- Park/Recreation/Conservation
- Undeveloped
- Right of Way
- Water
- Municipalities